

TLF 2.250-2.500

Internal Filter Inspection

-Tools required-
Flashlight



ATTENTION

VISUAL CLUES REGARDING VTLF 2.250 FILTER MAINTENANCE SHOULD NOT ALWAYS BE THE SOLE INDICATOR OF WHETHER A FILTER IS “CLEAN”.

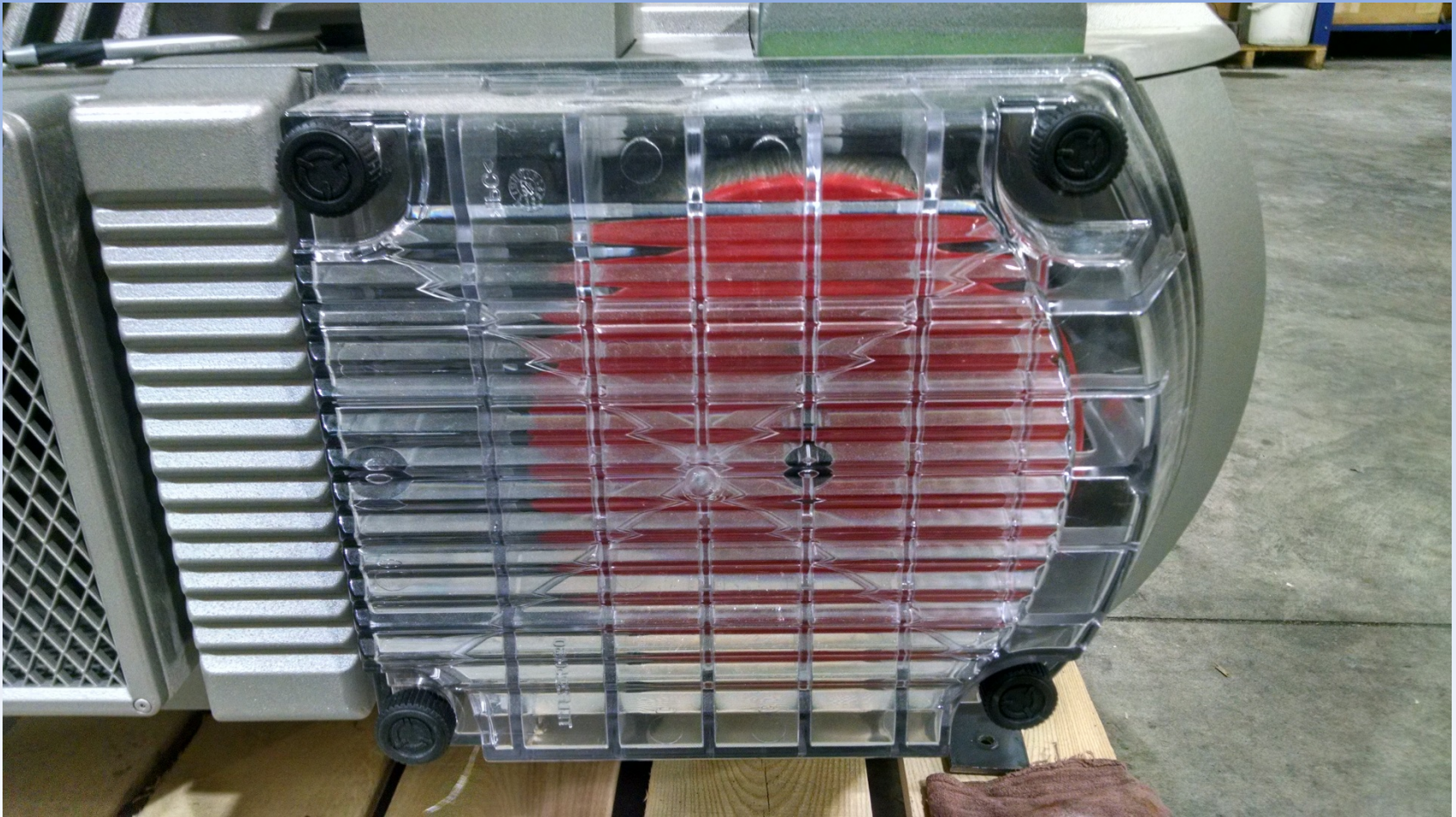
THOUGH THE FILTER HAS TREMENDOUS SURFACE AREA, THE DEEP PLEATING OF THE FILTER MAY DISGUISE WHETHER THE FILTER IS CLOGGED.

A PERIODIC PHYSICAL INSPECTION SHOULD BE PERFORMED TO MAKE SURE THERE IS A GOOD FLOW OF AIR THROUGH THE FILTER.

A CLOGGED FILTER IS ALMOST ALWAYS THE CAUSE OF PRE-MATURE VANE WEAR OR IN SOME CASES, PUMP FAILURE



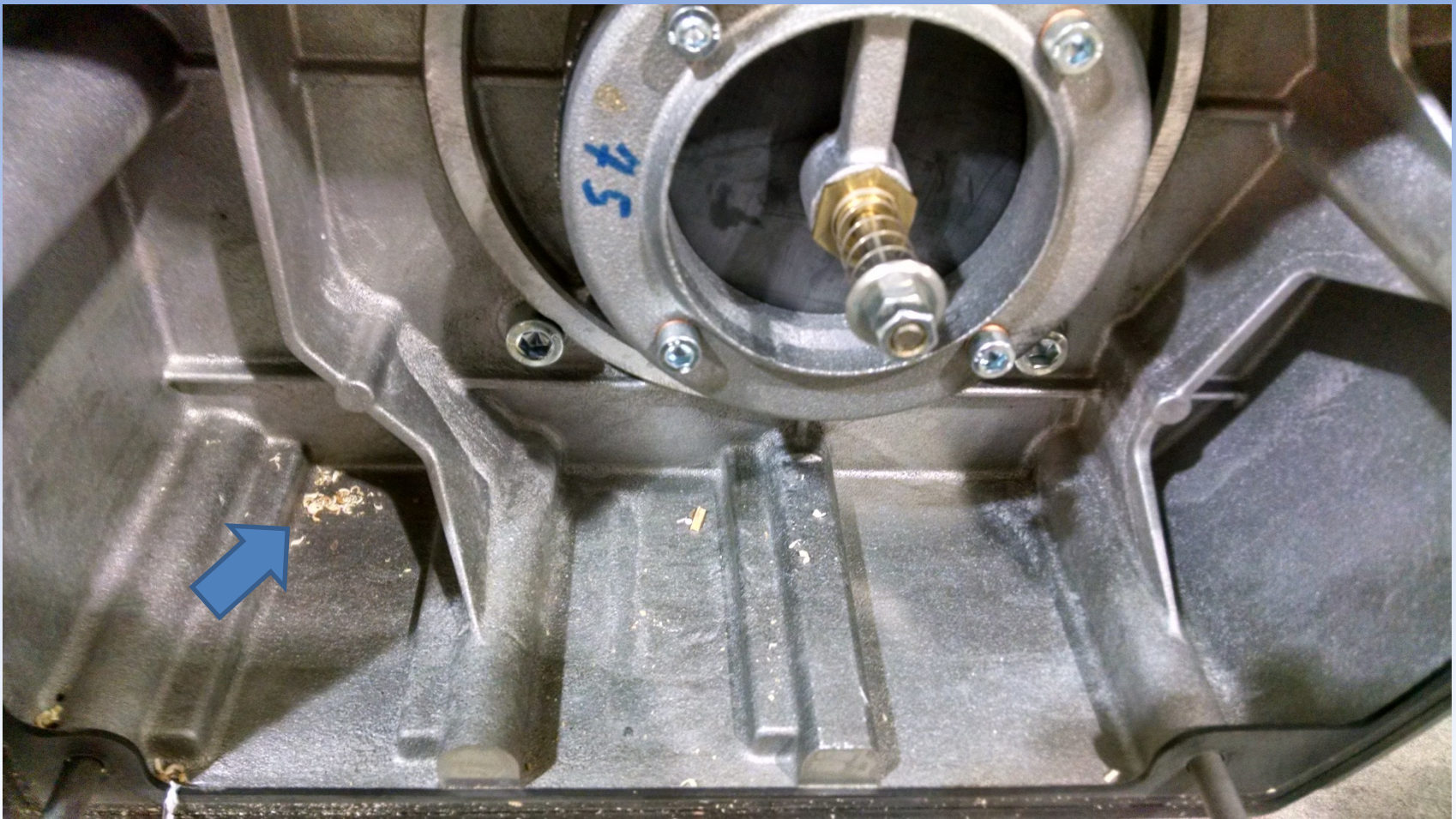
-Remove the (4) black knobs by hand-



Author: Mike Ruff
Becker Pumps Corp.

-Remove the internal filter and look for debris-

-Check for large debris deposits. This is an indicator that the filter caught the smaller particles-



-Use a flashlight on the outside of the filter-



If light **cannot** be seen on the inside, the filter is clogged and needs replaced.



-If you **can** see light, then blow out the filter using compressed air and replace-

- This needs to be a modest amount of light.
- Light should be present through each pleat.

